

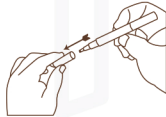
## THE APPLICATOR

Open box labeled PAUSHLÈ and remove applicator.



## 2. REMOVE THE CAP

Remove the cap of the PAUSHLÈ applicator.



## 3. TWIST THE TOP PART CLOCKWISE

Twist the top cylinder clockwise with the brush tip pointing down. Twist until the gloss moistens the tip. Wipe off excess gloss.



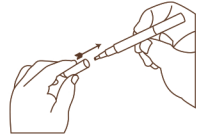
## 4. APPLY PAUSHLÈ

Lightly apply PAUSHLÈ to your ring, bracelet, necklace, or other jewelry.



## 5. REPLACE THE CAP

Replace the cap to store the PAUSHLÈ applicator in a cosmetics bag, purse, or pocket until your next application.



We highly recommend to reference instructional videos by visiting [paushle.com/instructions](https://paushle.com/instructions)